

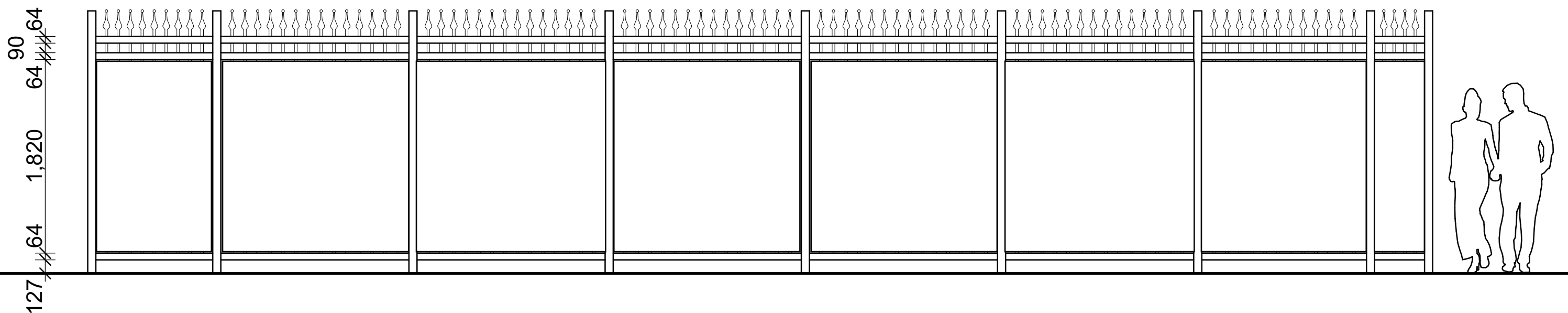
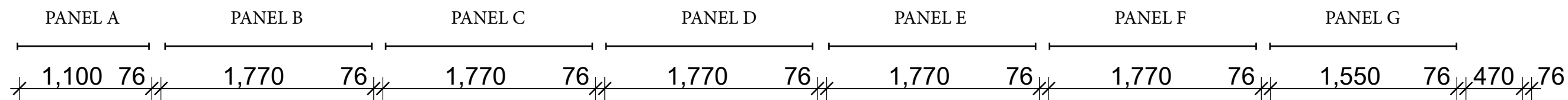


EXISTING CONDITIONS SHOWING PROPOSED TEMPORARY INTERPRETIVE PANELS (MARCH 18, 2017 - AUGUST 31, 2018)



**LORD STANLEY'S GIFT MONUMENT**  
**TEMPORARY INTERPRETIVE PANELS**

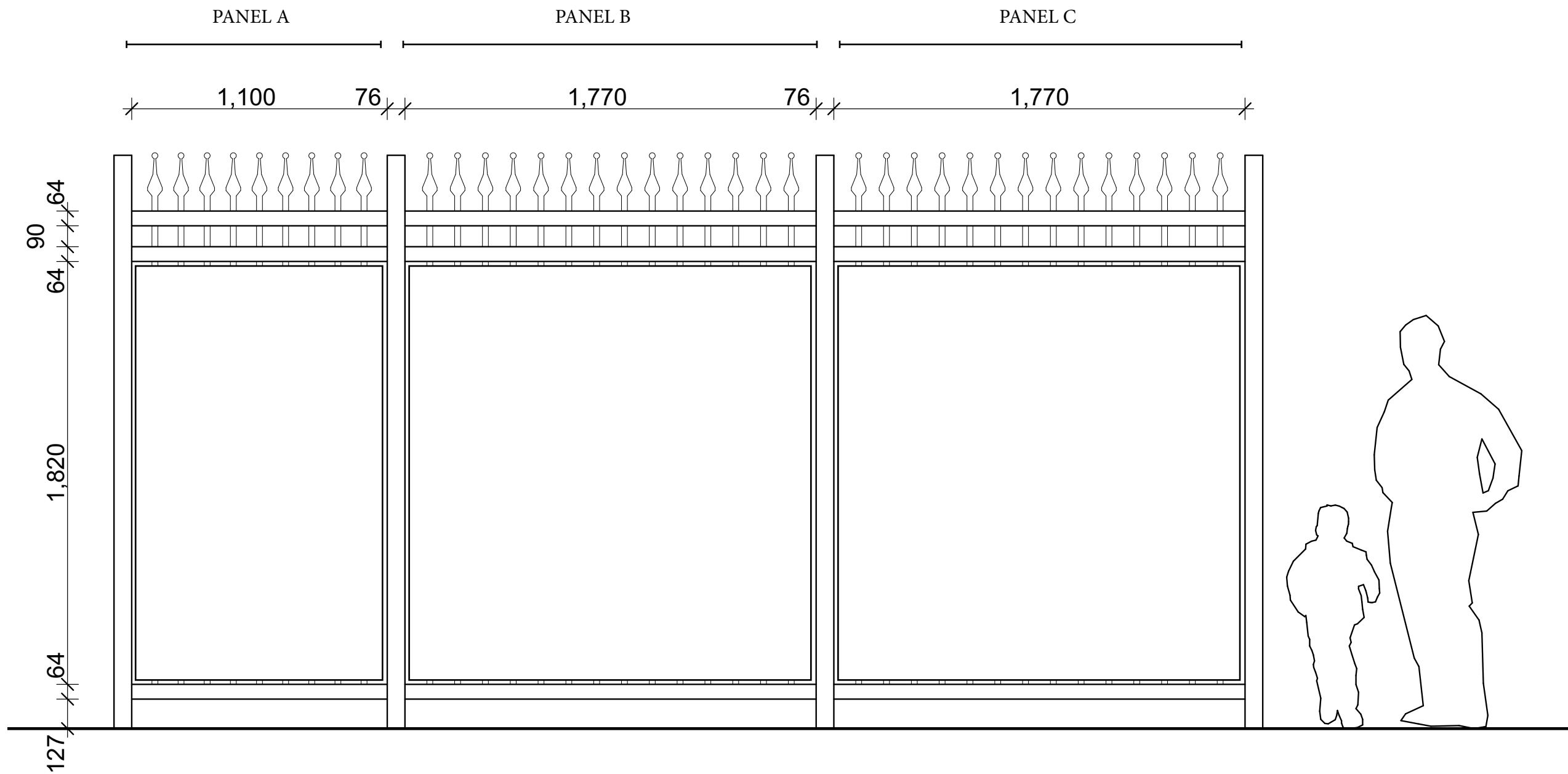
A-1



NORTH AND WEST ELEVATIONS (UNFOLDED) SCALE 1:30 APPROXIMATELY



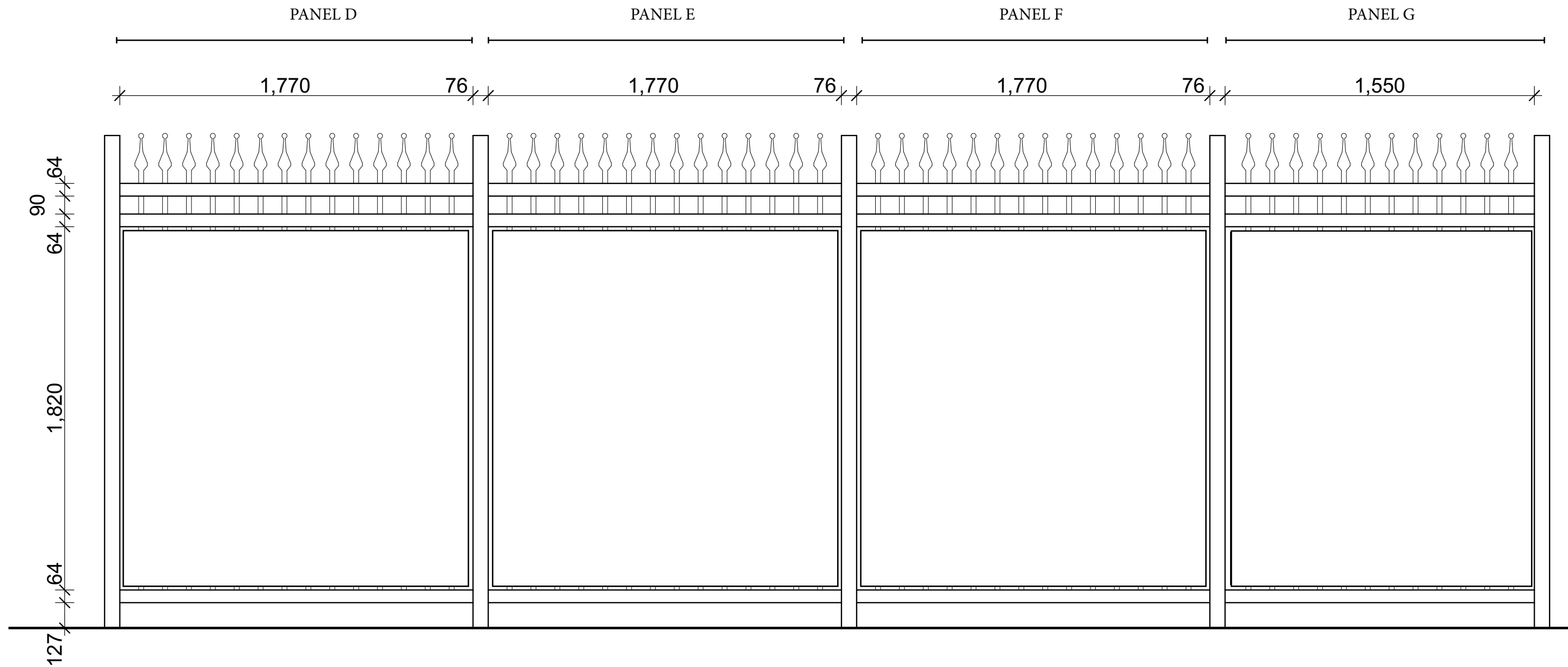
**LORD STANLEY'S GIFT MONUMENT**  
**TEMPORARY INTERPRETIVE PANELS**



NORTH ELEVATION SCALE NTS



**LORD STANLEY'S GIFT MONUMENT**  
**TEMPORARY INTERPRETIVE PANELS**



WEST ELEVATION SCALE NTS



**LORD STANLEY'S GIFT MONUMENT**  
**TEMPORARY INTERPRETIVE PANELS**